

DS420

INFLATABLE BOAT WITH ALUMINIUM FLOOR

Built tough so they work hard for rugged private and commercial use. The commercial boat series are a high quality utility option. Packed with exceptional performance features these versatile aluminium floored boats are the perfect solution for a range of uses.

SPECIFICATIONS

Max. loading: 7 persons,
1140kg (2513lb)
Outer dims: L: 4.2m (13'8), W: 1.9m (6'2)
Internal width: 94cm (37")
Tube diameter: 48cm (18.9")
Aluminium floor:
5 folding panels, 30kg (66lb)
Weight (inflatable only): 54kg (119lb)
Chambers: 3 + 1 (keel)
Max. tube pressure: 0.35bar/ 5 psi
Max. pressure inflatable floor:
0.7bar/ 10psi
Handles, lines, benches: 8 + 2 + 2
Recommended outboard:
30HP Max. or Electric 22.4Kw
Colours: red, yell, orange, black, green

BOAT FEATURES

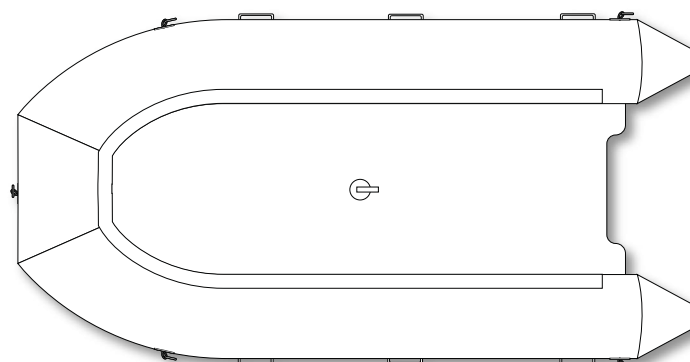
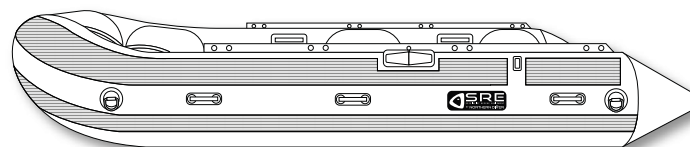
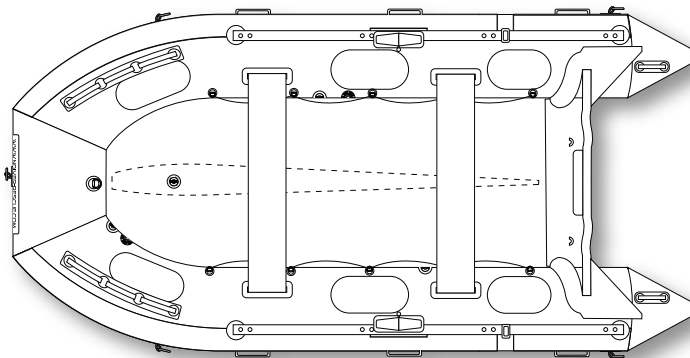
High quality commercial grade PVC
Marine plywood benches
Life lines
Stainless steel D-rings
Oar locking system
Grab handles
Aluminium floor panels
Outboard ready marine transom

WHATS INCLUDED?

165cm (65") T-bar floating paddles
HP2 inflation hand pump
Inflation valve fittings
Maintenance kit
Storage bag

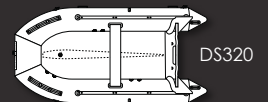
ADDITIONAL BOAT OPTIONS

Customer branding
Rapid inflation systems
Additional sub-waterline reinforcement
U-bolts fitted to transom
Additional D-rings
Storage pockets
Outboard motors:
(Suzuki, Parsun and Neraus)
SBS Bunk Style trailers

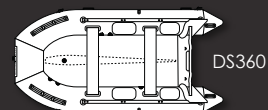


BOAT MODELS

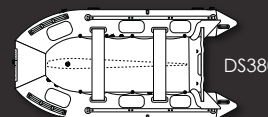
6 standard models available and any other size upon request



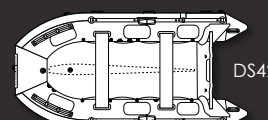
DS320



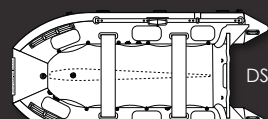
DS360



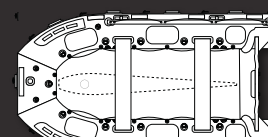
DS380



DS420



DS460



DS520

DESCRIPTION

INFLATABLE BOATS

STOCK CODE

BOAT-INFLATABLE 4.2

NORTHERN DIVER

+44 (0) 1257 25 44 44 | INFO@NDIVER.COM

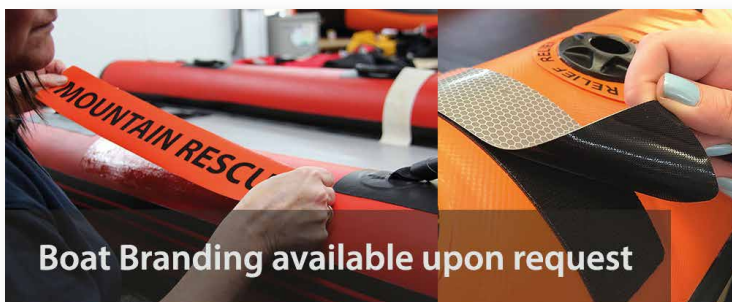
VISIT WWW.NDIVER-RESCUE.COM



BOAT FEATURES

- | | | |
|-----------------------------------|---------------------------------|--|
| 1 BOW HANDLE | 8 DIVER BRANDING | 15 MARINE GRADE PLYWOOD TRANSOM |
| 2 RUBBER STRAKE | 9 ALUMINIUM FLOOR PANELS | 16 U-BOLTS |
| 3 STAINLESS STEEL D-RINGS | 10 RUBBER HANDLES | 17 V-CONE STABILIZER |
| 4 SOFT GRIP HANDLES | 11 FLOOR SIDE JOINERS | 18 INFLATION/EXHAUST VALVES |
| 5 HIGH QUALITY PVC | 12 BENCH HOLDERS | 19 OAR STOPPER |
| 6 OPTIONAL CUSTOM BRANDING | 13 OAR LOCK SYSTEM | |
| 7 EXTERNAL LIFE LINES | 14 METAL INFO PLATE | |

NOTE PARTS INCLUDED ON EACH BOAT WILL DEPEND ON MODEL CHOSEN. PARTS NOT SHOWN MAYBE ADDED UPON REQUEST.



Boat Branding available upon request



What's Included?

