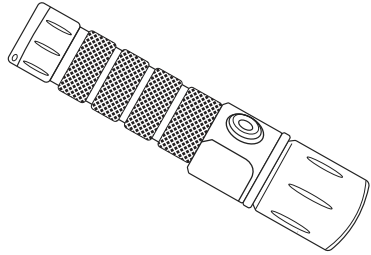


varilux^{micro}

RECHARGEABLE DIVE TORCH

Thank you for your purchase. Please read this manual carefully before using. It includes important product function and operational instructions.

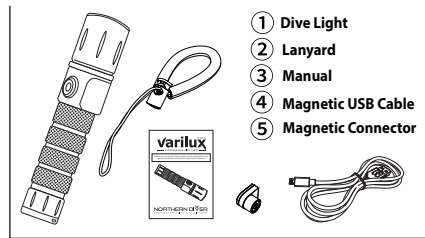


NORTHERN DIVER
OPENWATER SUITS & EQUIPMENT

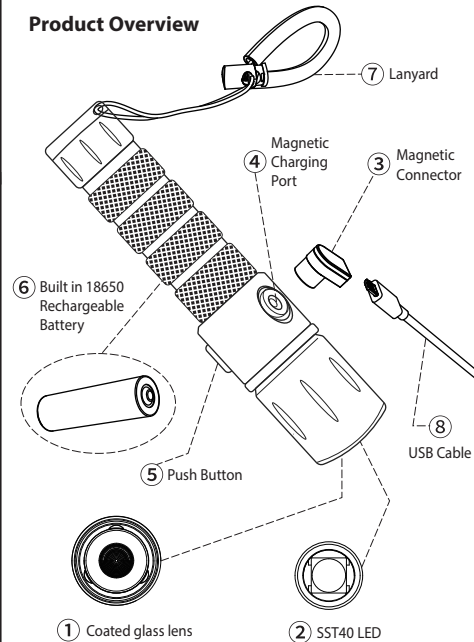
Specification

LED	SST40
Output	850 - 90 Lumens
Burn Time	2 - 28 Hrs
Beam Distance	280m (919')
Beam Intensity	20000 cd
Colour Temperature	White Light
Switch Design	Push Button
Impact Resistance	1m (3'3)
Build	Anodised Aluminium/Magnetic Charging
Battery	18650 3.7V, 2600 mAh
Dimensions	L 145mm (5.7") - Dia 35.5mm (1.4")
Weight (inc battery)	185g (0.4lbs)

What's Included?



Product Overview



Head Office
Northern Diver International Ltd
Appley Lane North
Appley Bridge
Wigan
Lancashire
WN6 9AE

Contacting Us
Email: info@ndiver.com
Telephone: +44 (0) 1257 25 44 44

Connect Online
Website: www.ndiver.com
@NorthernDiverUK

How did we do?



Your feedback is important to us, please leave us a review!

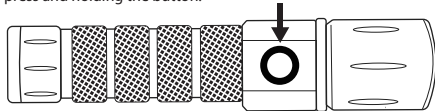
www.ndiver.com/review-us

HAVE YOU SIGNED UP TO OUR NEWSLETTER FOR THE LATEST NEWS, OFFERS AND NEW PRODUCTS?

CE FC RoHS

Operation

ONE BUTTON CONTROL
Easily turn the torch on/off and cycle through the modes by press and holding the button.



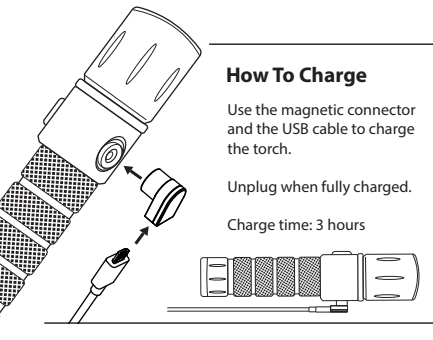
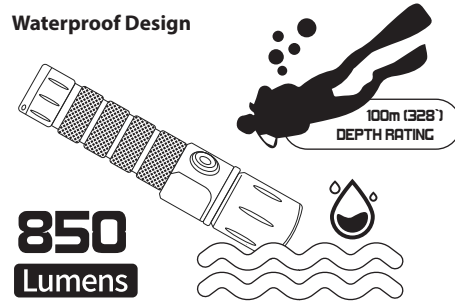
High → Press and hold → Low

On/Off → Press to switch torch on and off

Safety Precautions

- ⚠ **DO NOT** shine the light directly into eyes. May cause temporary blindness or permanent damage.
- ⚠ **DO NOT** cover light head or place the light down on the ground when light is on. The radiation energy may cause damage to the light or result in burning other materials.
- ⚠ **DO NOT** leave the light in any type of fabric bag or plastic container under high temperatures.
- ⚠ **DO NOT** try to modify this torch in any way. Doing so will void any warranty.

Waterproof Design



How To Charge

Use the magnetic connector and the USB cable to charge the torch.

Unplug when fully charged.

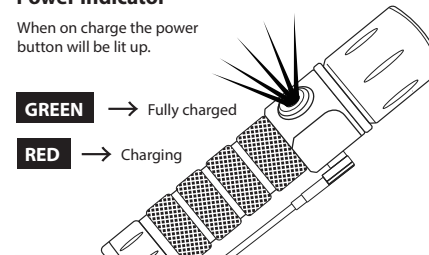
Charge time: 3 hours

Power Indicator

When on charge the power button will be lit up.

GREEN → Fully charged

RED → Charging

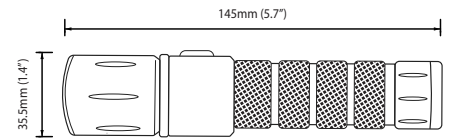


Battery status will be indicated around the power button LED: Green 100-50% | Red 50-20% | Flash Red <20%
Please note: approx 10 mins remain when LED flashes red

Important Notice

- ⚠ Please make sure you only use the supplied magnetic connector to recharge the torch to prevent short circuiting and damage to the light.
- ⚠ Do not try to change the battery, this is built in and if tampered with will damage the waterproof performance
- ⚠ Clean the torch with fresh water after each use. Do not use cleaning agents that may damage. Clean with a soft cloth to avoid scratches.
- ⚠ Do not attempt to modify or repair the torch. All repairs must be carried out by a trained technician.

Dive Torch Dimensions



Main Features

Super bright SST40 LED
White light colour temperature
LED life span: 10,000 hours
18650 rechargeable battery, 3.7V, 2600mAh
Magnetic USB charging design
Anodised aluminium build
Simple push button switch design
Intelligent over-heat protection to avoid overheating on surface
Application: outdoor activities and underwater activities

280m (919') Beam Distance | 1m (3'3) Impact Resistance | 100m (328') Depth Rating

Torch Modes

	OUTPUT	BURN TIME
High	850 Lumens	2 hours
Low	90 Lumens	28 hours